

Craig Kilby
309-256-3887

Don Rhoads
217-997-5511

Bryan Young
217-997-5511

Evaluate Corn Stands ~by Craig Kilby

Don't wait for stand issues to be discovered too late when evidence no longer exists to determine causes. Yes, the past two weeks of uncommonly warm weather has allowed a majority of corn to be planted in what most would consider ideal conditions. Though, don't take for granted the emergence and populations without a first hand evaluation. Its been said there are over 1000 variables in raising a crop and many of those occur from planting through emergence. It typically requires 100-120 GDD units for corn emergence. Roughly 125-150 GDD unit accumulation is best to conduct stand evaluations. (Find GDD date on line: www.isws.illinois.edu/warm/cropdata/cropddcalc.asp) This timing will allow accurate stand counts as well as easier scoring of vigor and uniformity of plants within the stand.

1. Record stand counts across 4- 5 different locations in each field. Be sure to check different rows on the planter to assess the consistency of planter units. Also, be sure to check hybrids individually if planted within a field or planter pass.
2. Check planting depth as well as emergence timing based on variability of plant size. When planting into a dry, finely worked seedbed, soil can fall back into the seed furrow ahead of the seed and be pushed by a seed firmer along with the seed affecting consistency of both seed spacing and depth.
3. Was spring NH3 applied to the field? How healthy do the roots and mesocotyl appear? Both should be white and free of any discoloration. Even if planting was delayed 7-10 days following NH3 applications injury can occur. The dry conditions, which followed most spring ammonia applications, raise the potential. The recent soaking rains should eliminate further injury
4. Check plant spacing. Again record the spacing and incidence of skips or doubles across planter rows, different seed grades, and hybrids used. Remember even though spacing is important, as populations increase, any resulting yield loss from deviated spacing decreases. Skips are costly at any population and doubles can cause barren ears and simply waste seed.
5. Record early vigor and emergence scores of hybrids. Genetic performance varies, but unmatched Burrus seed quality combined with Poncho 250 or Poncho 500, and Stamina seed treatments provides industry-leading seed emergence and seedling health. A combination sure to provide the highest yield potential in any field environment.

Growing Degree Day (GDD) Websites

Illinois: www.isws.illinois.edu/warm/cropdata/cropddcalc.asp

Simply enter the crop, planting date and nearest reporting station.

Missouri: agebb.missouri.edu/weather/reports/gddTable.asp

Entire Midwest: mcc.sws.uiuc.edu/cliwatch/gdd_maps.html

FSA (Farm Service Agency) Reminder

Sign up deadline is June 1.

Stored Grain

Check bins at least once a week as temperatures rise. Move or remove small quantities from bins periodically to monitor grain quality.

Soybean Seeding Rates

Burrus seeding rate recommendations are listed on the back cover of the Burrus 2010 Growing Guide. If you need one of these handy pocket size guides, contact your dealer, RSM, or Burrus toll free @ 877- 4- BURRUS (877-428-7787)



Cutworm Update ~by Don Rhoads

The first captures of black cutworm moths for the Midwest were reported the first week of April. The warm April temperatures have allowed faster than average larval development.

After reported flights, an accumulation of 300 growing degree-days is required for black cutworm cutting to begin. The first cutting is estimated to begin the first week of May in Illinois and Missouri. Early feeding is confined to leaf tissue until the larvae are large enough to start cutting plants.

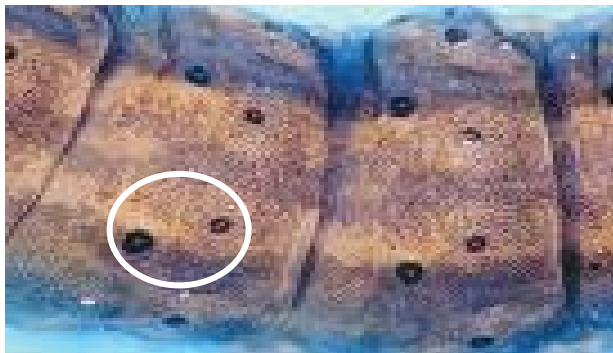
Dingy cutworms, which resemble black cutworm, live through winters as larvae. Dingy cutworm usually feed on leaf tissue and seldom cut enough plants for economic damage. It's important to properly identify which species of cutworm is present. Poncho is labeled for black cutworm, but not dingy cutworm. (see below)

Herculex® I and Herculex® Xtra are also labeled for black cutworm, and do an excellent job protecting the young plants.

Even with Herculex and Poncho® treated seed, it's important to scout your fields. Winter annuals in many fields this spring were very attractive for black cutworm moths to lay their eggs. We recommend you scout for this first flight and possible subsequent flights throughout the spring. If you discover that cutting is at or exceeds the 3% threshold level in Poncho treated fields, contact your Burrus or Hoblit RSM. If a rescue treatment is needed, Bayer will pay up to \$4.00 per acre for Baythroid insecticide. Applying a preventative insecticide with herbicides is usually not recommended because black cutworm injury is so unpredictable and the effectiveness of these insecticides can diminish before black cutworm larvae are present.

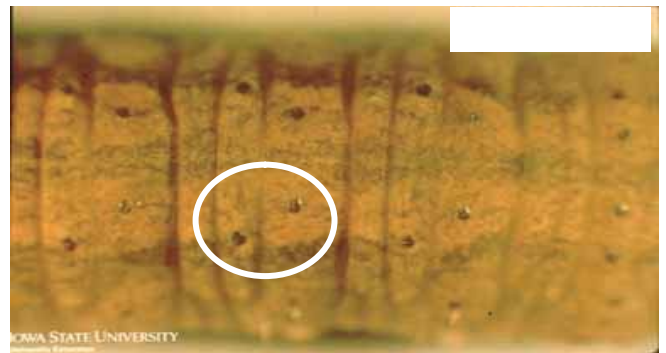
Call your Burrus® or Hoblit RSM or our office if you have questions concerning black cutworm or other agronomic issues.

Black cutworm



Uneven sized tubercles

Dingy cutworm



Even sized tubercles

TREATED SOYBEANS NON-RETURNABLE

Both Hoblit brand and Power Plus® brand soybeans treated with Burrus PowerShield® treatment are non-returnable. If you believe you have excess seed ordered contact your dealer or DSM immediately. They will do their best to relocate it to growers needing additional supply.

Talc Rate for John Deere Vacuum Planters

When using Deere seed discs:Talc rate of ½-1 cup talc/bushel seed. Use higher rate when planting PowerShield treated soybeans, high rate treated corn, and when humidity levels are higher. A good indication of the correct usage is to occasionally inspect the seed meter parts for seed treatment buildup. If seed treatment is building up on the disk then more talc should be used.